

050919

RECEIVED
LARAMIE COUNTY
CHEYENNE, WY.

CERTIFIED LAND CORNER RECORDATION

DESCRIPTION OF CORNER EVIDENCE FOUND, AND ORIGINAL RECORD (if known) **NOV 9 AM 9 09**
Found no evidence of previous monumentation.

1/4 S.14
S.23
T.14N., R.63W.
6th P.M.

G.L.O. Record: Granite stone 14" x 10" x 4" set by Edwin James & Alfred M. Rogers, Deputy Surveyors, June 16, 1871.

DESCRIPTION OF MONUMENT AND ACCESSORIES ESTABLISHED
TO PERPETUATE THE ORIGINAL LOCATION OF THIS CORNER:

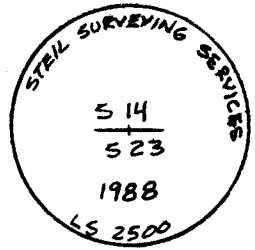
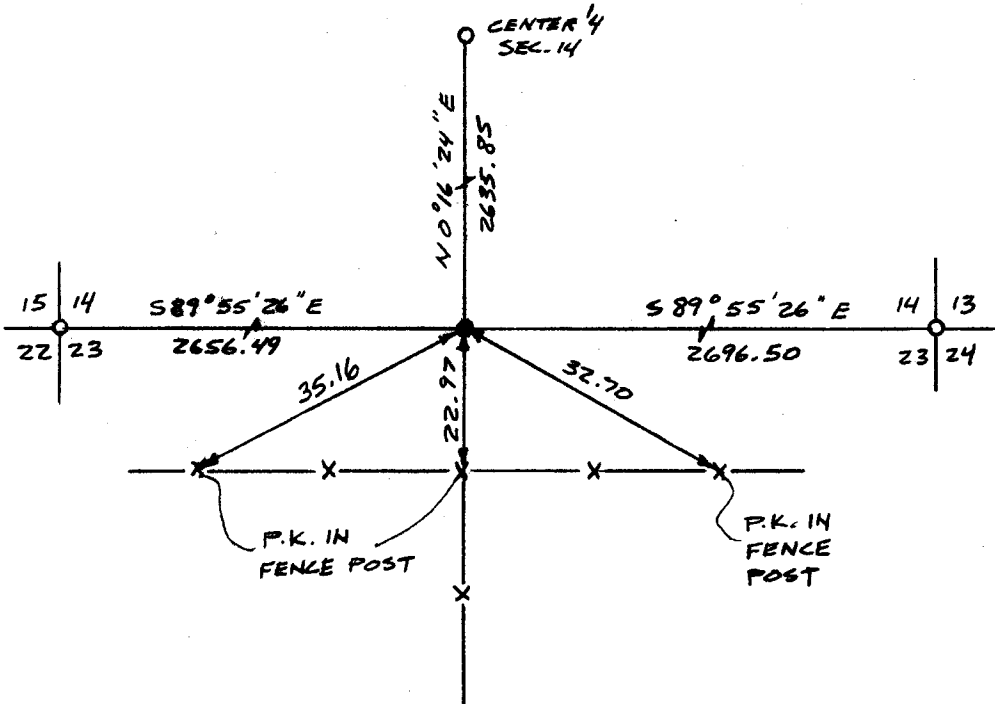
At the corner:

Set 2 1/2" x 30" Aluminum Pipe with 3" Aluminum Cap on line between SW & SE corner Sec. 14 at fence line South, 23' North of E-W fence, projecting 2" above ground encircled by stone and stamped as shown below.

Accessories :

See ties below.

SKETCH, WITH COURSE AND DISTANCE TO ADJACENT CORNER IF DETERMINED IN THIS SURVEY.
(May Sketch or Paste Reproduction on Reverse Side.)



I, John A. Steil certify that I have carefully performed or reviewed the work done on the diagrammed corner as reported on this recordation form and approve the same.

John A. Steil
Signature of Surveyor

L.S. 2500
Registration No.

STATE OF WYOMING,
Office of Clerk and Recorder,
County of _____

This "corner record" was filed for record on the _____ day of _____, 19____, was noted on the cross-index plat and is assigned page No. _____, in book No. _____.

County Official				
Cross Index No.	N-19	T.	14N	R. 63W Mer. 6th
_____	_____	_____	_____	Mer. _____
_____	_____	_____	_____	Mer. _____
_____	_____	_____	_____	Mer. _____
_____	_____	_____	_____	Mer. _____
_____	_____	_____	_____	Mer. _____
_____	_____	_____	_____	Mer. _____
_____	_____	_____	_____	Mer. _____